

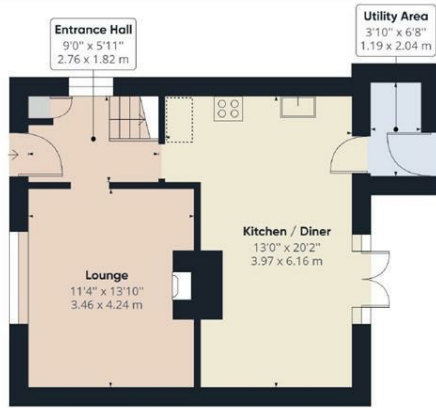


## 177 Knights Road, Hoo, Rochester, Kent, ME3 9BY

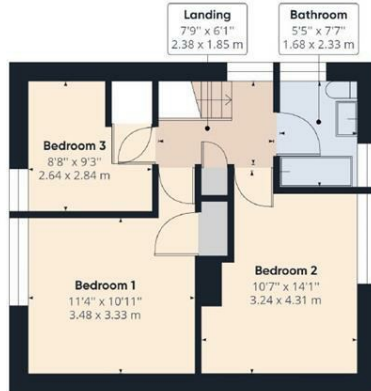
Draft details. Located in the highly sought after area of Hoo, which is a semi rural village on the Peninsular is this 3 bedroom family home. Transport links to the A2/M2 and Medway Tunnel are good and the area is serviced by a local bus route. Hoo is also home to a sports centre with a swimming pool, a variety of local shops a doctors surgery and primary and secondary schools. This 3 bedroom semi detached house, could be your ideal next home. Upon entry via the hallway there is a neutrally decorated lounge with log burner, the fitted kitchen/diner is to the rear, which is flooded with natural light via the French doors. There is a utility area, which also has access to the rear garden. The family bathroom and good size bedrooms are located on the first floor. The 2 front bedrooms also boast far reaching views over the area. The rear garden offers a great space for entertaining guests and children in the summer and is mainly laid to lawn, with a rear barked area and has side and rear access. There is potential for parking to the front and possibly the rear subject to the relevant consents being obtained. Call the office to book your internal viewing.

- 3 BEDROOMS
- VILLAGE LOCATION
- VIEWS FROM FRONT BEDROOMS
- LARGE REAR GARDEN
- MODERN KITCHEN/DINER
- SOUGHT AFTER LOCATION
- FEASURE LOG BURNER
- UTILITY AREA
- GREAT FAMILY HOME
- POSSIBLE POTENTIAL FOR PARKING

**£325,000**



Ground Floor Building 1



Floor 1 Building 1

Approximate total area<sup>(1)</sup>

887.79 ft<sup>2</sup>  
82.48 m<sup>2</sup>

Reduced headroom

6.13 ft<sup>2</sup>  
0.57 m<sup>2</sup>

(1) Excluding balconies and terraces

⌊ Reduced headroom  
(below 1.5m/4.92ft)

While every attempt has been made to ensure accuracy, all measurements are approximate, not to scale. This floor plan is for illustrative purposes only.

GIRAFFE360

